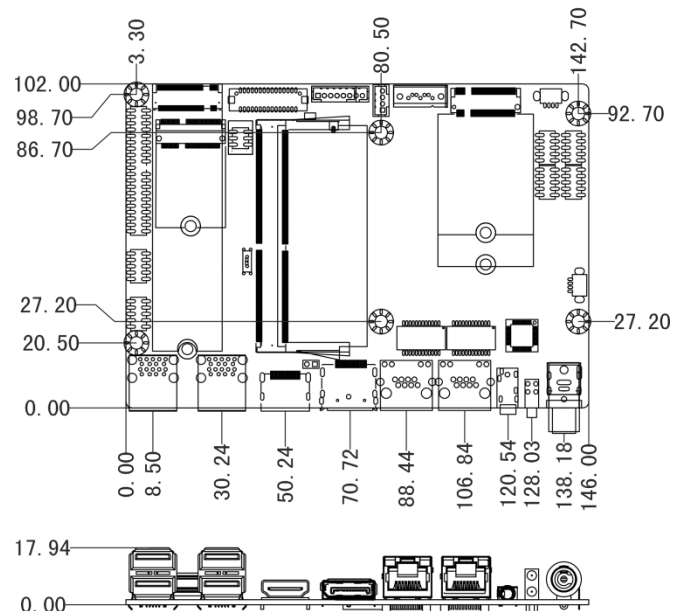
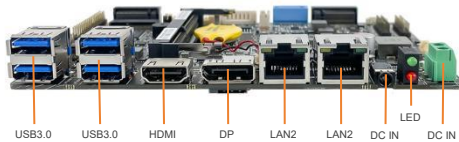
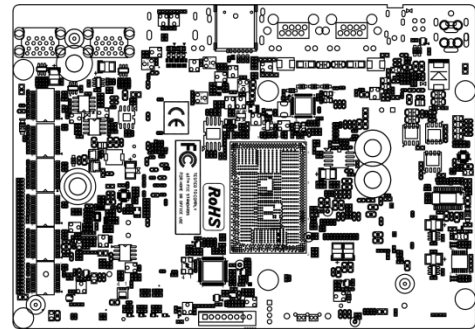
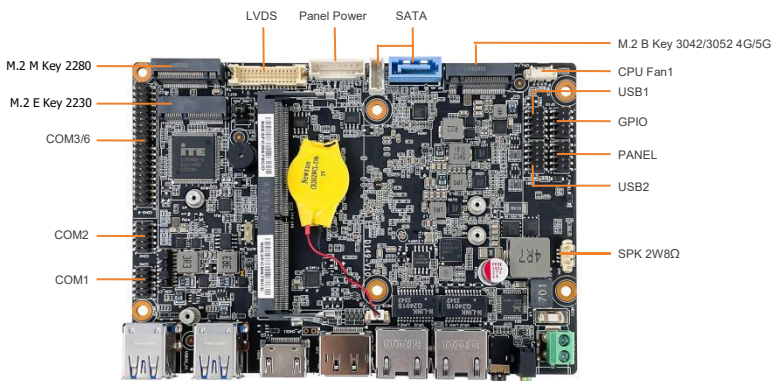


Features

- Intel® Celeron® J6412 Quad-core 2.0 GHz, TDP 10W
- 1 x DDR4 3200MHz SODIMM, MAX 32GB
- 1 x 2.5 SATA HDD, 1 x M.2 2280 SATA SSD
- 1 x M.2.0 (2230, Wifi+BT), 1 x M.2.0 (3042/3052, 4G/5G)
- Supports dual independent display: 1 x HDMI, 1 x DP, 1x LVDS
- 2 x Intel® 226-V 2.5GbE Ethernet, support WoL and PXE
- 6 x COM (2x RS232/RS485), ESD and Surge Protection
- Support TPM2.0 hardware security
- 9V to 36VDC Wide Range Power Input, Supporting OVP / OCP / RPP

I/O Layout



Specifications

System	CPU	Intel® Elkhart Lake Celeron J6412 Quad-core 2.0GHz
	L2 Cache	1.5MB
	TDP	10W
	Chipset	Integrated with Intel® SoC
	BIOS	AMI UEFI BIOS
	Watchdog Timer	Software Programmable Supports 1~255 sec. System Reset
	TPM	TPM 2.0
Memory	Technology	Single Channel (Non-ECC) DDR4 3200MHz, up to 32GB
	Slot	1 x DDR4 SO-DIMM Slot
Storage	SATA	1 x SATA3.0 Port
	M.2	1 x M.2-2280 M Key SSD Slot (SATA3.0 Signal)
Graphic	Controller	Intel HD Graphics Integrated
Audio	Codec	Realtek ACL897 Audio controller
Display I/F	Display	1x DP1.4, Max Resolution up to 4096x2160@60Hz
		1x HDMI, Max Resolution up to 4096x2160@30Hz
		1x LVDS: Dual Channel 18/24-bit, up to 1920x1200
External I / O	Ethernet	1x GbE1: Intel I226v 2.5GbE LAN PXE Support
		1x GbE2: Intel I226v 2.5GbE LAN PXE Support
	USB	4x USB 3.2 Gen1x1 (5Gbps), Type A
	Audio	1x Audio_out & Mic_in
Internal I/O	M.2	1x M.2 (Key-E, 2230, PCIe+USB, Wifi+)
		1x M.2 (Key-B, 3042/3052, PCIe/ USB 3.0+USB2.0, 4G/5G)
		1x M.2 (Key-M, 2280 SATA, SSD)
	GPIO	1x 8bit GPIO(2*5pin)
	USB	4x USB2.0 wafer (2*5pin)
	COM	2x RS232/485 wafer(2*5pin)(COM1/COM2)
		4x RS232 wafer(2*5pin)(COM3/COM4/COM5/COM6)
	PANEL	1x Panel wafer (2*5pin)
	FAN	1x Smart Fan wafer (1*4pin)
	SPK	1x SPK 2W8Ω wafer (1*4pin)
	SATA	1x SATA 6.0 Gb/s
		1x +5V SATA Power Connector
	Invertor	1x 12V/5V/3V Selectable
	SIM Slot	1x SIM Socket
Power	Power Mode	Support AT, ATX Mode
	Power Supply Voltage	DC IN 9~36V
	Power Connector	1x 2-pin Phoenix Terminal Block
	Power Protection	OVP (Over Voltage Protection) OCP (Over Current Protection) RPP (Reverse Polarity Protection)
Operating System	Windows	Windows10/11 IoT Enterprise
	Linux	Linux
Physical	Dimensions	146mm x 102mm
	Weights	0.3kg
Environment	Operating Temperature	-20°C ~70°C, 10 ~90%(non-cpmdensing)
	Storage Temperature	-40°C ~80°C, 10 ~90%(non-cpmdensing)
	Certification	CE/FCC Class A