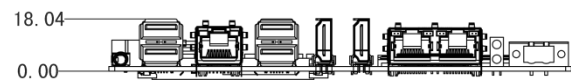
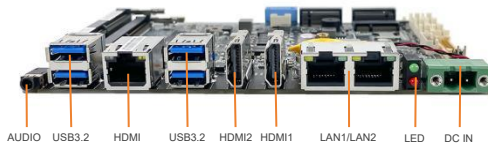
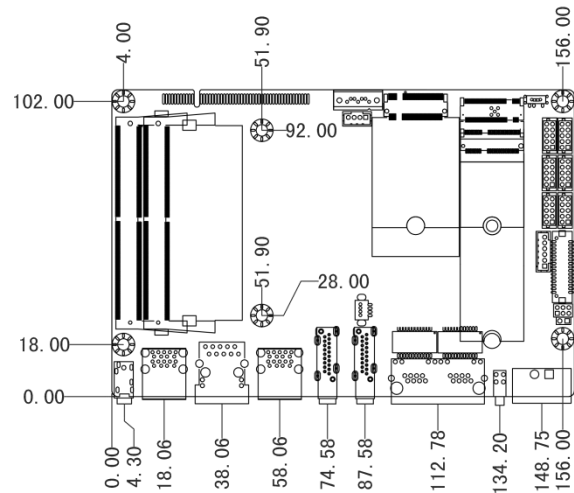
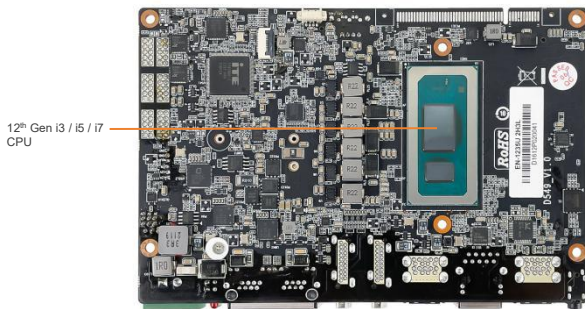
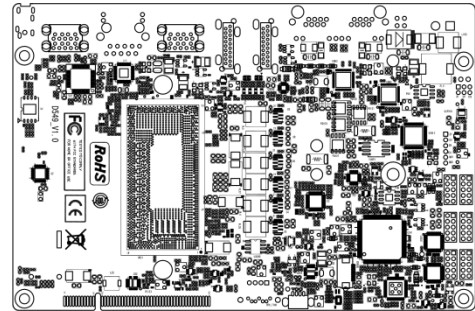
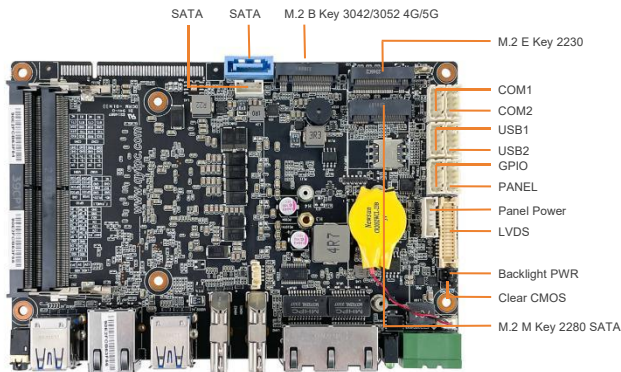


主板特点

- 12th Gen Intel® Whiskey Lake Core™ i3 / i5 / i7, TDP 15W
- 1 x DDR5 4800MHz SODIMM, MAX 64GB
- 1 x 2.5 SATA HDD, 1 x M.2 2280 SATA SSD
- 1 x M.2.0 (2230, Wifi+BT), 1 x M.2.0 (3042/3052, 4G/5G)
- Supports dual independent display: 1 x HDMI, 1 x DP, 1x LVDS
- 3 x Intel® 226-V 2.5GbE Ethernet, support WoL and PXE
- 2 x COM (RS232/422/485), ESD and Surge Protection
- Support TPM2.0 hardware security
- 9V to 36VDC Wide Range Power Input, Supporting OVP / OCP / RPP

I/O Layout



规格参数

系统参数	处理器	12th Gen Intel® Core™ i3-1215U 1.2GHz / i5-1235U 1.3GHz / i7-1255U 1.7GHz
	二级缓存	10MB / 12MB / 12MB
	散热设计功率	15W
	芯片组	Integrated with Intel® SoC
	BIOS	AMI UEFI BIOS
	看门狗定时器	Software Programmable Supports 1~255 sec. System Reset
	TPM	TPM 2.0
内存	Technology	Single Channel (Non-ECC) DDR5L 4800MHz, up to 64GB
	插座	1 x DDR5 SO-DIMM Slot
硬盘	SATA	1 x SATA3.0 Port
	M.2	1 x M.2-2280 M Key SSD Slot
图像	控制器	Intel® UHD Graphics / Intel® Iris® Xe Graphics
声音	Codec	Realtek ACL897 Audio controller
显示器	显示接口	1x DP1.4, Max Resolution up to 4096x2160@60Hz
		2x HDMI, Max Resolution up to 4096x2160@30Hz
I/O 接口	以太网	1x GbE1: Intel I226V 2.5GbE LAN PXE Support
		1x GbE2: Intel I226V 2.5GbE LAN PXE Support
		1x GbE3: Intel I219V 1.0GbE LAN PXE Support
	USB	4x USB 3.2 Gen2x1 (5Gbps), Type A
	音频	1x Audio_out & Mic_in
内置 I/O	M.2	1*M.2 (Key-E, 2230, PCIe+USB, Wifi+BT)
		1*M.2 (Key-B, 3042/3052, PCIe/ USB 3.0+USB2.0, 4G/5G)
		1*M.2 (Key-M, 2280, NVMe/ SATA, SSD)
	GPIO	1x 8bit GPIO(2*5pin)
	USB	2x USB2.0 wafer (2*5pin)
	串口	2x RS232/422/485 wafer(2*5pin)(COM1/COM2)
	CPU	1x CPU-FAN (1*4pin)
	SPK	1x SPK 2W8Ω wafer (1*4pin)
	PANEL	1x Panel Connector (2*5pin)
	Invertor	1x 12V/5V/3V Selectable
SIM 插座	1x SIM Socket	
电源	电源类型	Support AT, ATX Mode
	电源输入	DC IN 9~36V
	电源连接器	1x 2-pin Phoenix Terminal Block
	电源保护	OVP (Over Voltage Protection) OCP (Over Current Protection) RPP (Reverse Polarity Protection)
操作系统	Windows	Windows10/11 IoT Enterprise
	Linux	Linux
物理特性	产品尺寸	160mm x 106mm
	净重	0.3kg
环境/认证	工作温度	-20°C ~70°C, 10 ~90%(non-cpmdensing)
	存储温度	-40°C ~80°C, 10 ~90%(non-cpmdensing)
	认证	CE/FCC Class A