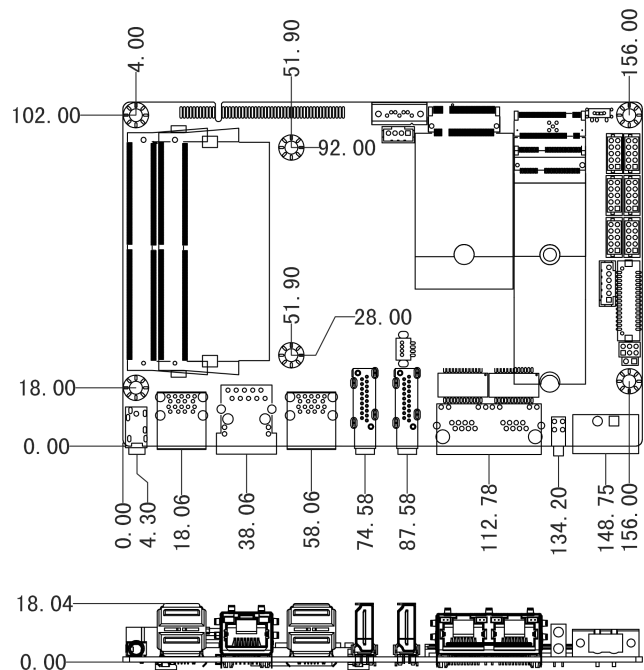
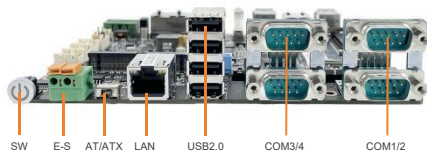
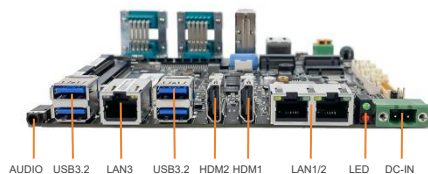
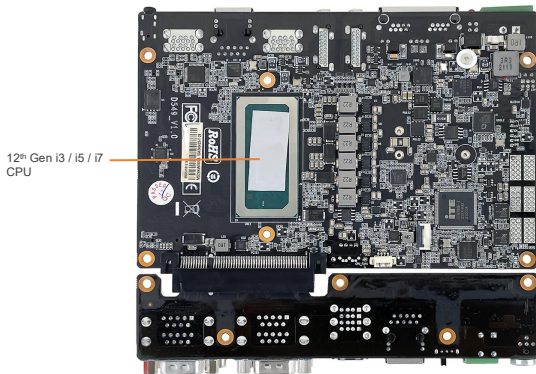
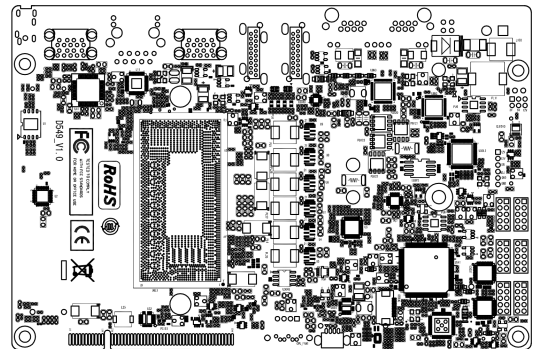
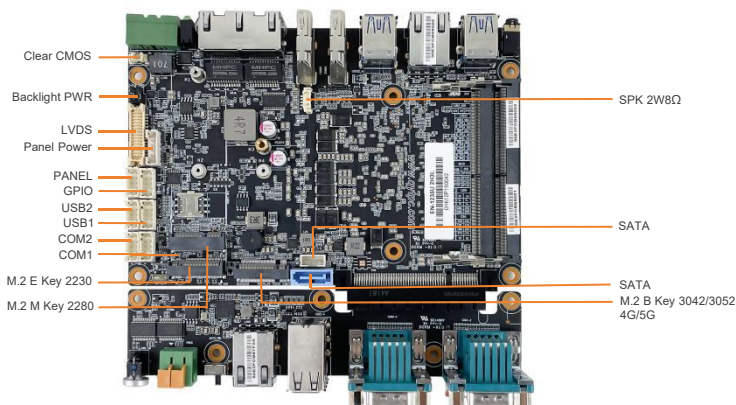


主板特点

- 12th Gen Intel® Whiskey Lake Core™ i3 / i5 / i7, TDP 15W
- 1 x DDR5 4800MHz SODIMM, MAX 64GB
- 1 x 2.5 SATA HDD, 2 x M.2 2280 SATA SSD
- 1 x M.2.0 (2230, Wifi+BT), 1 x M.2.0 (3042/3052, 4G/5G)
- Supports dual independent display: 1 x HDMI, 1 x LVDS
- 4 x Intel® 226-V 2.5GbE Ethernet, support WoL and PXE
- 6 x COM (2x RS232/RS422/RS485), ESD and Surge Protection
- Support TPM2.0 hardware security
- 9V to 36VDC Wide Range Power Input, Supporting OVP / OCP / RPP

I/O Layout



规格参数

系统参数	处理器	12th Gen Intel® Core™ i3-1215U 1.2GHz / i5-1235U 1.3GHz / i7-1255U 1.7GHz
	二级缓存	10MB / 12MB / 12MB
	散热设计功率	15W
	芯片组	Integrated with Intel® SoC
	BIOS	AMI UEFI BIOS
	看门狗定时器	Software Programmable Supports 1~255 sec. System Reset
	TPM	TPM 2.0
内存	Technology	Single Channel (Non-ECC) DDR5L 4800MHz, up to 64GB
	插座	1 x DDR5 SO-DIMM Slot
硬盘	SATA	1 x SATA3.0 Port
	M.2	2 x M.2-2280 M Key SSD Slot
图像	控制器	Intel® UHD Graphics / Intel® Iris® Xe Graphics
声音	Codec	Realtek ACL897 Audio controller
显示	显示接口	1x DP1.4, Max Resolution up to 4096x2160@60Hz
		2x HDMI, Max Resolution up to 4096x2160@30Hz
I/O 接口	以太网	1x GbE1: Intel I226V 2.5GbE LAN PXE Support
		1x GbE2: Intel I226V 2.5GbE LAN PXE Support
		1x GbE3: Intel I226V 2.5GbE LAN PXE Support
		1x GbE4: Intel I219 1.0GbE LAN PXE Support
	USB	4x USB 2.0 (480Mbps), Type A
		4x USB 3.2 Gen2x1 (5Gbps), Type A
	串口	2x COM 1, COM 2 (RS-232 / 422 / 485, Adjustable through BIOS)
		2x COM 3, COM 4 (RS-232)
	音频	1x Audio_out & Mic_in
	Indicators	1x SATA LED(Red), 1x Power LED(Green),
远程电源开关	1x Remote SW	
电源按钮	1x Power Button	
内置 I/O	M.2	1*M.2 (Key-E, 2230, PCIe+USB, Wifi+BT)
		1*M.2 (Key-B, 3042/3052, PCIe/ USB 3.0+USB2.0, 4G/5G)
		1*M.2 (Key-M, 2280, NVMe/ SATA, SSD)
	GPIO	1x 8bit GPIO(2*5pin)
	USB	2x USB2.0 wafer(2*5pin)
	串口	2x RS232/485 wafer(2*5pin)(COM3/COM4)
	CPU	1x CPU-FAN (1*4pin)
	SPK	1x SPK 2W8Ω wafer (1*4pin)
	PANEL 插座	1x Panel Connector (2*5pin)
SIM 插座	1x SIM Socket	
电源	电源类型	Support AT, ATX Mode
	电源输入	DC IN 9~36V
	电源连接器	1x 2-pin Phoenix Terminal Block
	电源保护	OVP (Over Voltage Protection) OCP (Over Current Protection) RPP (Reverse Polarity Protection)
操作系统	Windows	Windows 7 / 8 / 10 IoT Enterprise
	Linux	Linux
物理特性	产品尺寸	160mm x 106mm
	净重	0.3kg
环境/认证	工作温度	-20°C ~70°C, 10 ~90%(non-cpmdemsing)
	存储温度	-40°C ~80°C, 10 ~90%(non-cpmdemsing)
	认证	CE/FCC Class A