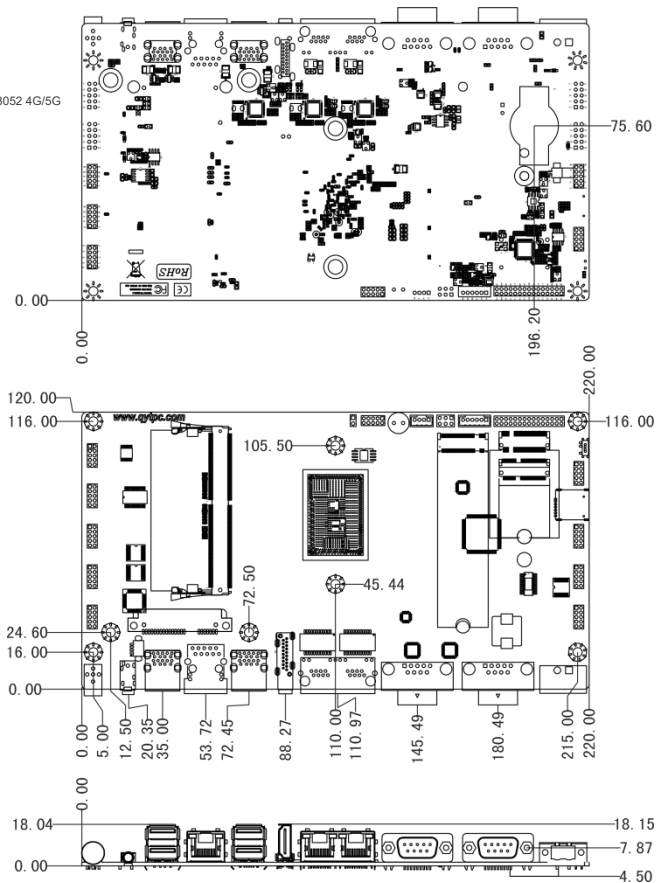
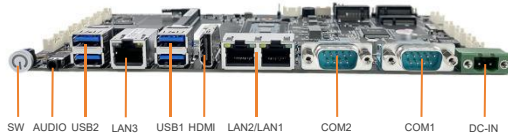
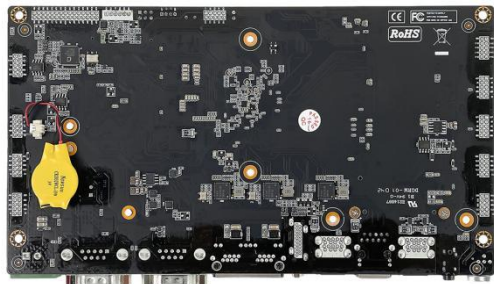
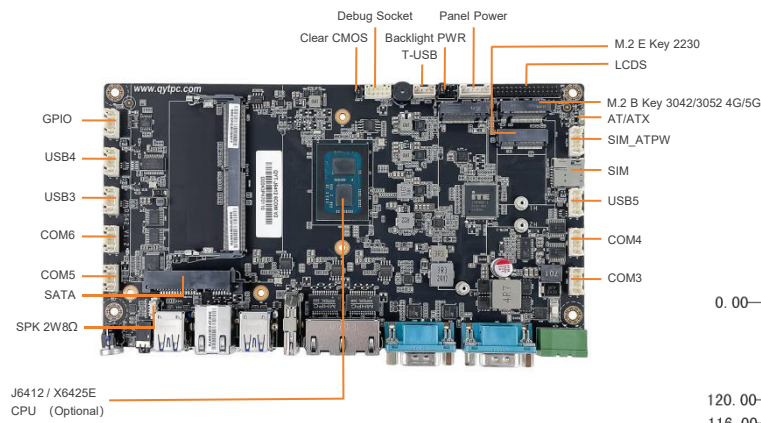


## 主板特点

- Intel® Celeron® J6412 Quad-core 2.0 GHz, TDP 10W
- 1 x DDR4 3200MHz SODIMM, MAX 32GB
- 1 x 2.5 SATA HDD, 1 x M.2 2280 SATA SSD
- 1 x M.2.0 (2230, Wifi+BT), 1 x M.2.0 (3042/3052, 4G/5G)
- Supports dual independent display: 1 x HDMI, 1 x LVDS
- 3 x Intel® 226-V 2.5GbE Ethernet, support WoL and PXE
- 6 x COM (2x RS232/RS422/RS485), ESD and Surge Protection
- Support TPM2.0 hardware security
- 9V to 36VDC Wide Range Power Input, Supporting OVP / OCP / RPP

## I/O Layout



## 规格参数

系统参数	处理器	Intel® Elkhart Lake Celeron J6412 2.0GHz	Intel® Elkhart Lake Atom X6425E 2.0GHz
	二级缓存	1.5MB	1.5MB
	散热设计功率	10W	10W
	芯片组	Integrated with Intel® SoC	
	BIOS	AMI UEFI BIOS	
	看门狗定时器	Software Programmable Supports 1~255 sec. System Reset	
	TPM	TPM 2.0	
内存	Technology	Single Channel (Non-ECC) DDR4L 3200MHz, up to 32GB	
	插座	1 x DDR4 SO-DIMM Slot	
硬盘	SATA	1 x SATA3.0 Port	
	M.2	1 x M.2-2280 M Key SSD Slot (SATA3.0 Signal)	
图像	控制器	Intel HD Graphics Integrated	
声音	Codec	Realtek ACL897 Audio controller	
显示	显示接口	1x HDMI, Max Resolution up to 4096x2160@30Hz	
		1x LVDS: Dual Channel 18/24-bit, up to 1920x1200	
I/O 接口	以太网	1x GbE1: Intel I226v 2.5GbE LAN PXE Support	
		1x GbE2: Intel I226v 2.5GbE LAN PXE Support	
		1x GbE3: Intel I226v 2.5GbE LAN PXE Support	
	USB	4x USB 3.2 Gen1x1 (5Gbps), Type A	
	串口	2x COM 1, COM 2 ( RS-232 / 422 / 485, Adjustable through BIOS )	
	音频	1x Audio_out & Mic_in	
	电源按钮	1x Power Button	
内置 I/O	M.2	1x M.2 ( Key-E, 2230, PCIe+USB, Wifi+BT )	
		1x M.2 ( Key-B, 3042/3052, PCIe/ USB 3.0+USB2.0, 4G/5G )	
		1x M.2 ( Key-M, 2280 SATA, SSD )	
	GPIO	1x 8bit GPIO(2*5pin)	
	USB	1x USB2.0 wafer(1*4pin)	
		6x USB2.0 wafer(2*5pin)	
	串口	4x RS232 wafer(2*5pin)(COM3/COM4/COM5/COM6)	
	Debug Socket	1x Debug wafer(2*5pin)	
	SPK	1x SPK 2W8Ω wafer (1*4pin)	
Invertor	1x 12V/5V/3V Selectable		
SIM 插座	1x SIM Socket		
电源	电源类型	Support AT, ATX Mode	
	电源输入	DC IN 9~36V	
	电源连接器	1x 2-pin Phoenix Terminal Block	
	电源保护	OVP ( Over Voltage Protection )   OCP ( Over Current Protection )   RPP ( Reverse Polarity Protection )	
操作系统	Windows	Windows10/11 IoT Enterprise	
	Linux	Linux	
物理特性	产品尺寸	220mm x 120mm	
	净重	0.5kg	
环境/认证	工作温度	-20°C ~70°C, 10 ~90%( non-cpmdensing )	
	存储温度	-40°C ~80°C, 10 ~90%( non-cpmdensing )	
	认证	CE/FCC Class A	